

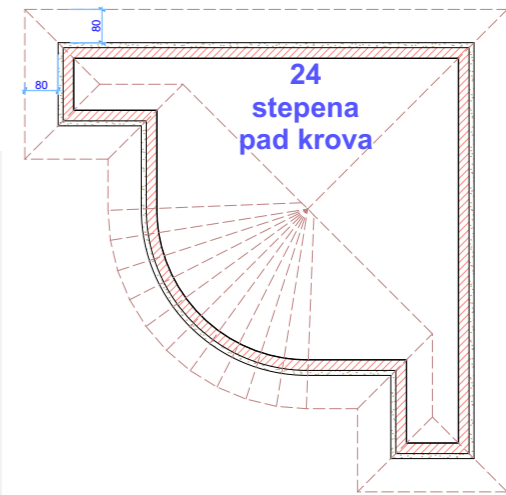
Zidovi su kompozitni
Naziv zida - Noseci zid
Debljina je 38cm
12 + 25 +1

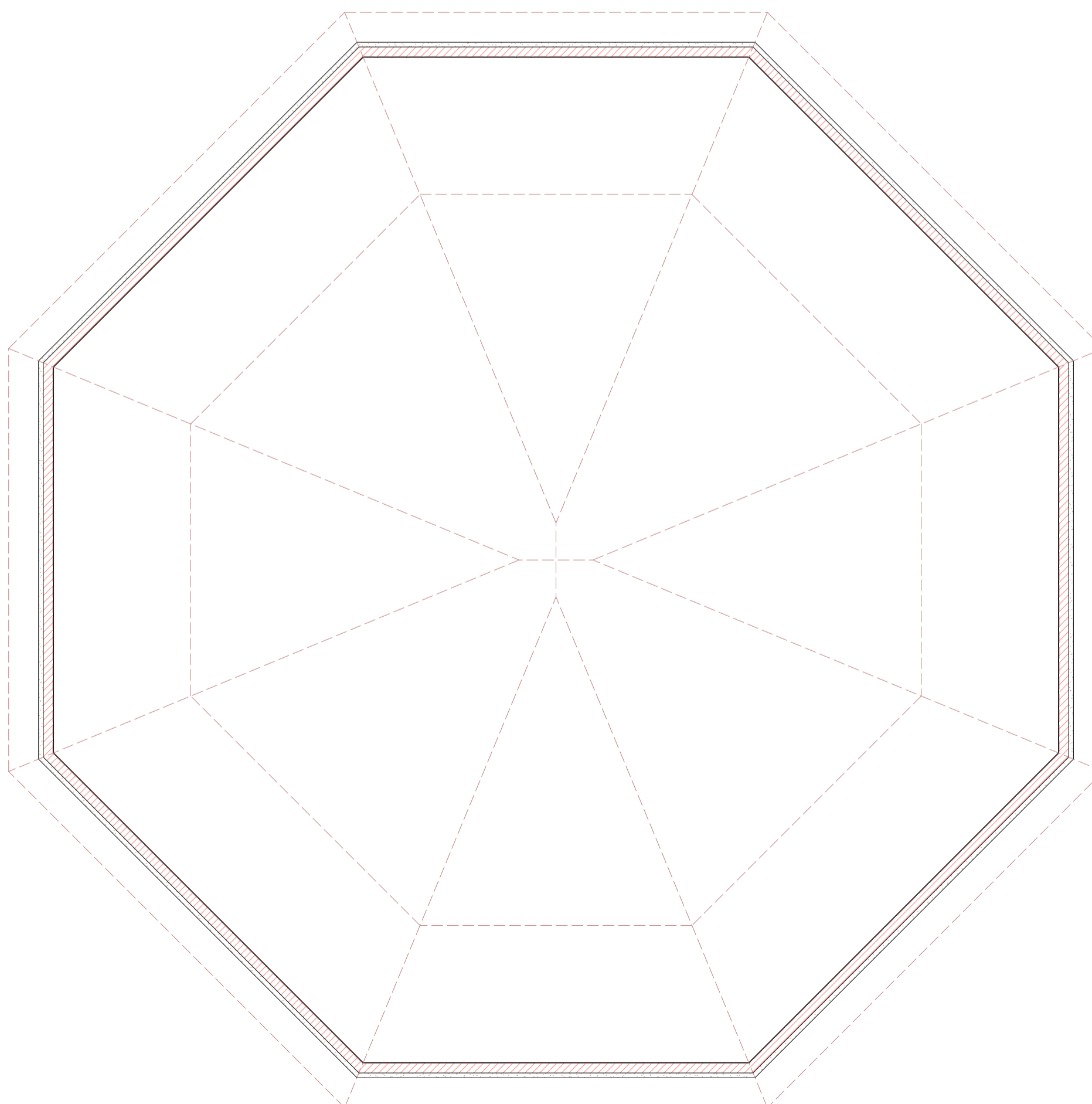
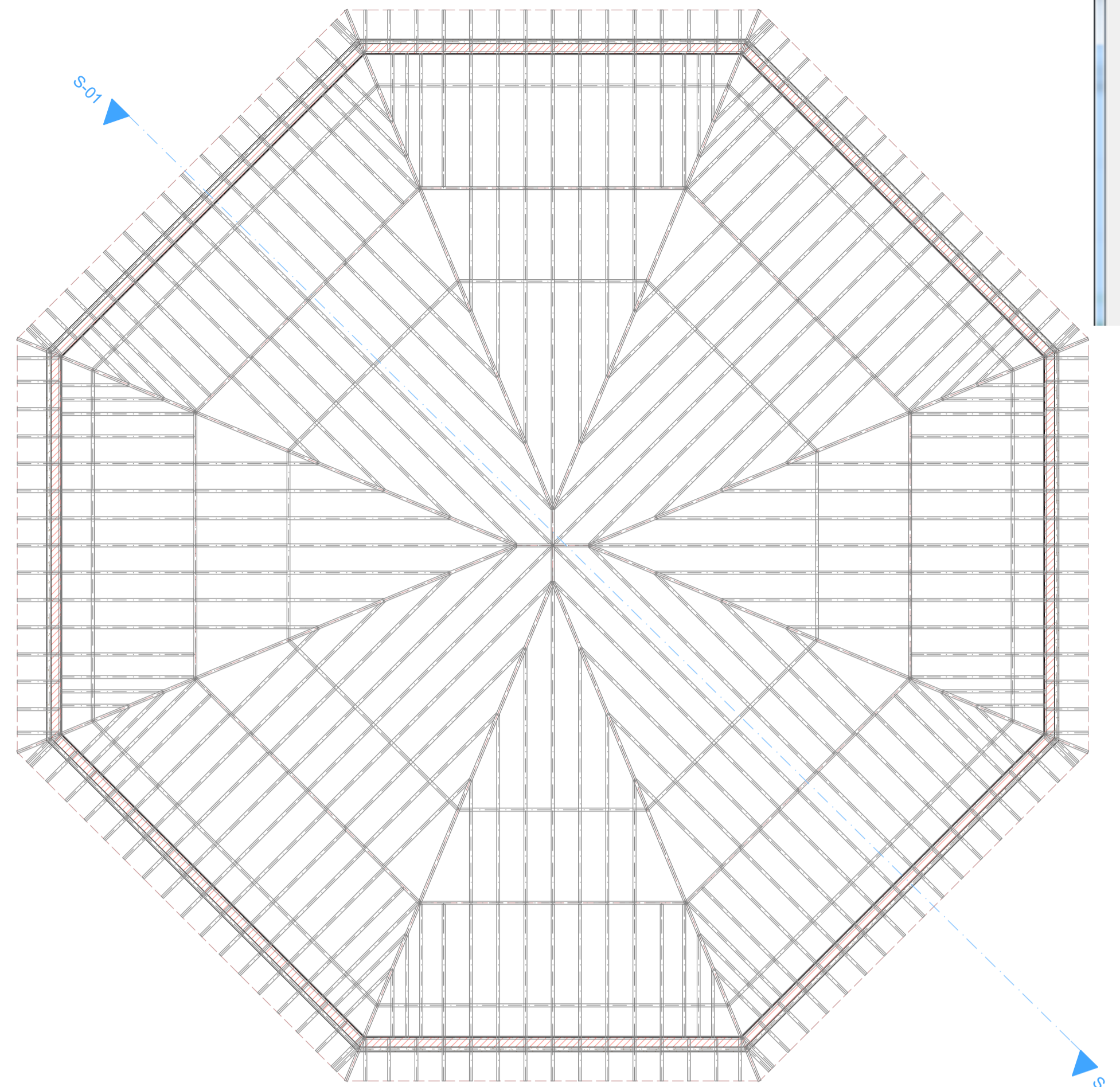
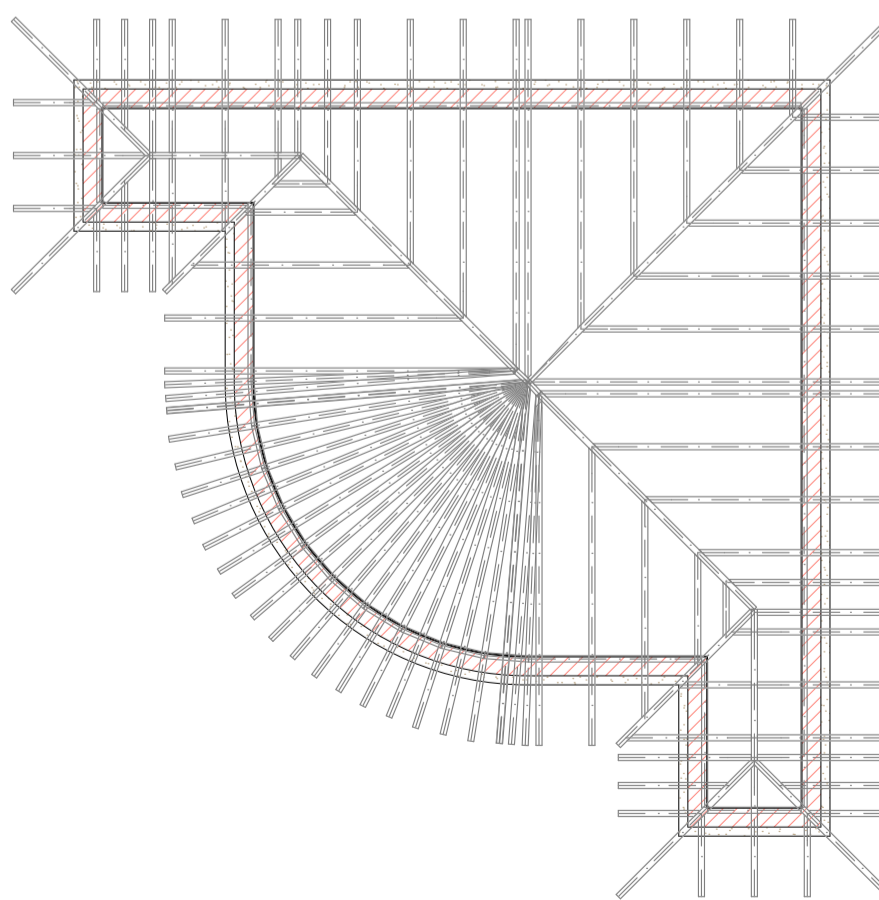
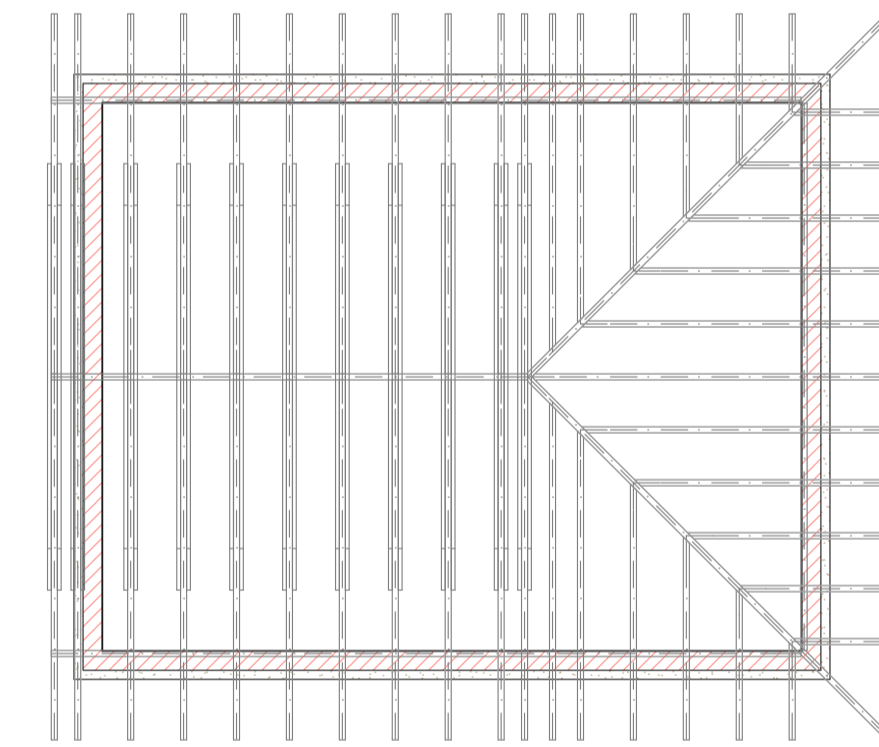
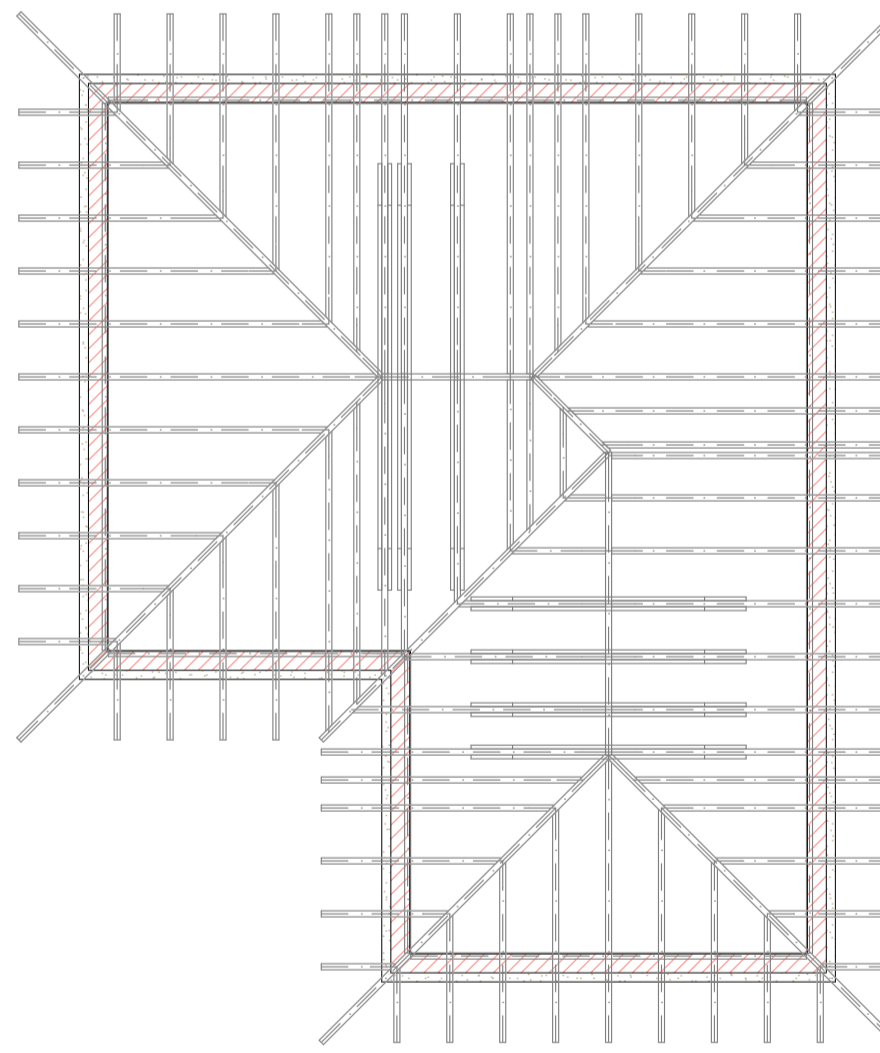
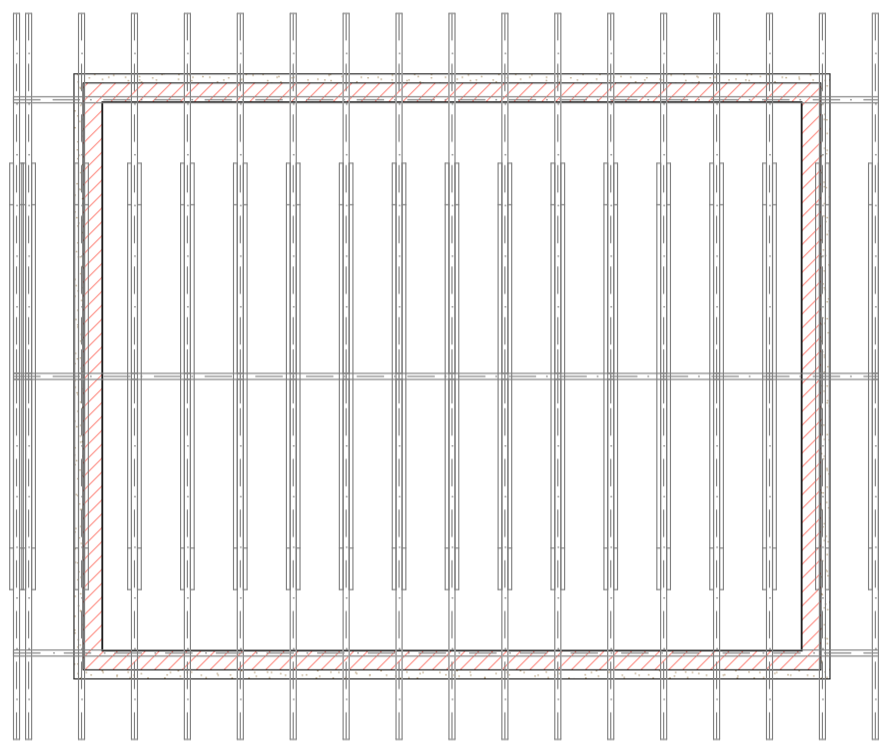
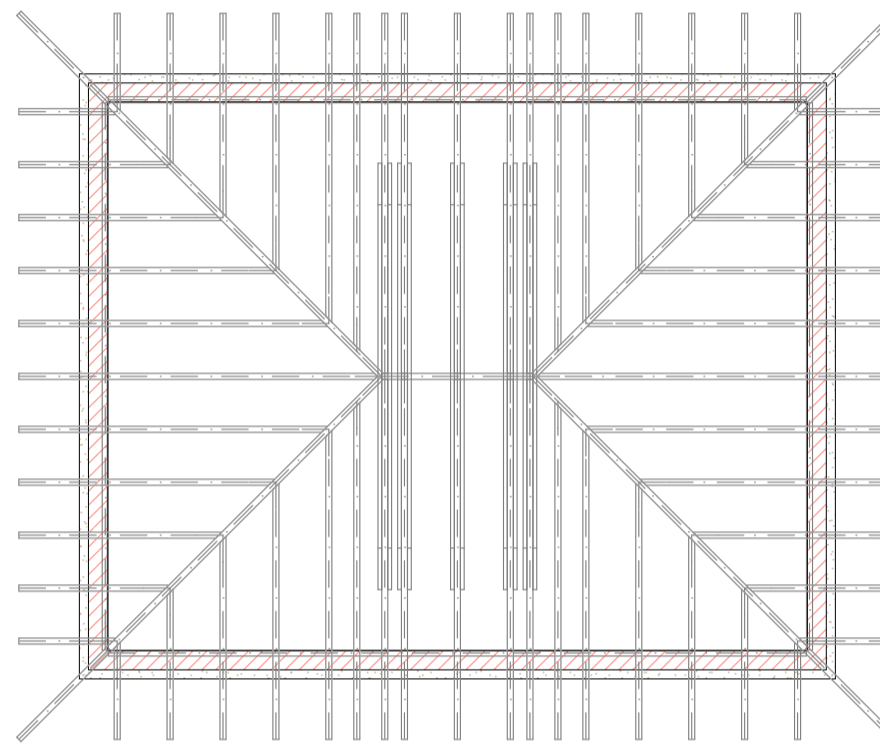
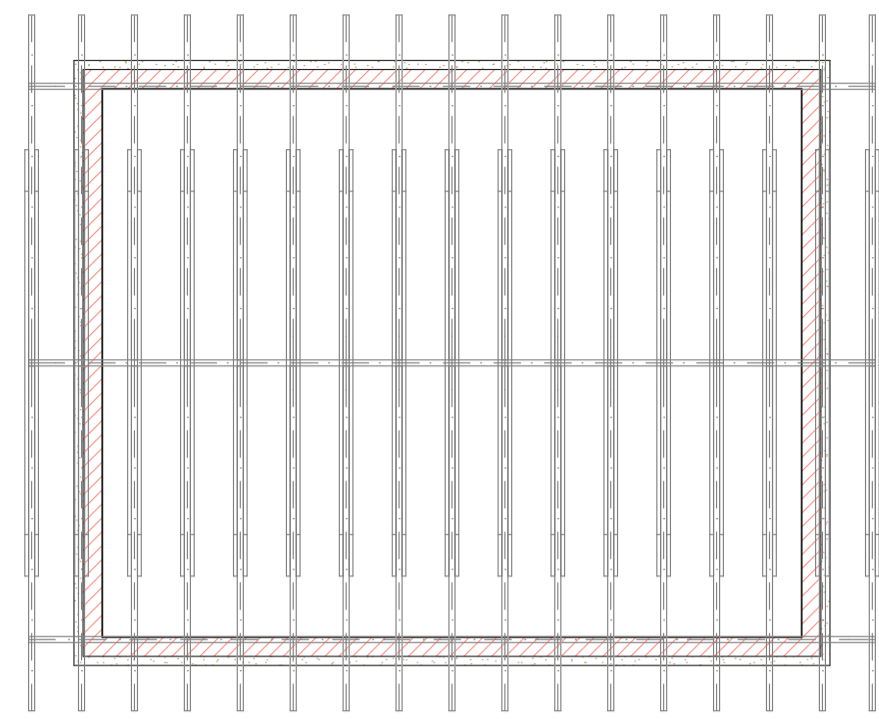
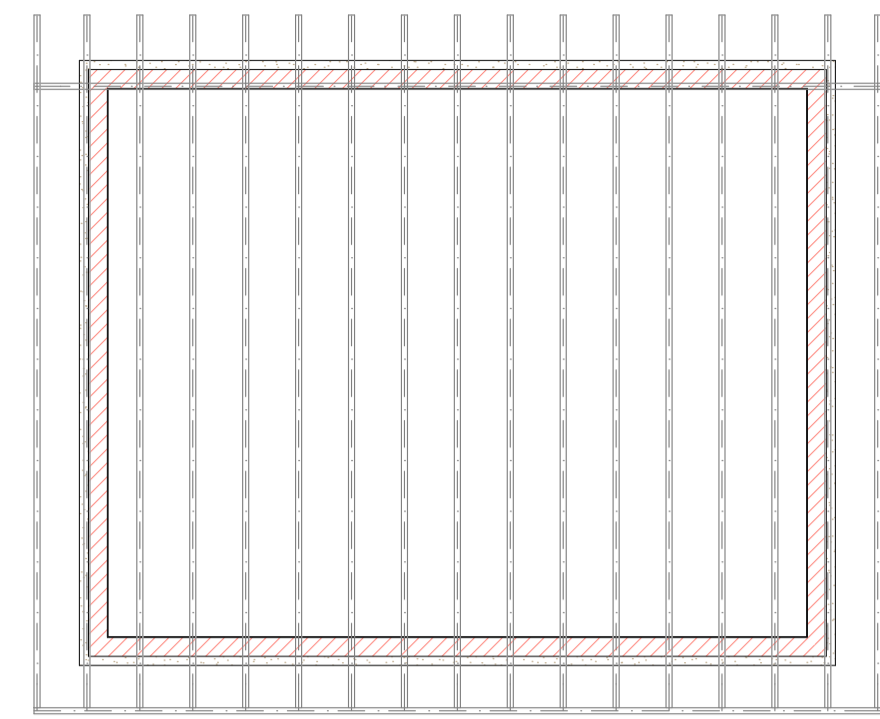
Material	Line Pen	Type	Thickness
Stone - Structural	1	12	12
Brick - Structural	1	25	25
Plaster - Gypsum	1	1	1

Total thickness: [cm] 38

Use With: [Material Selection]

Buttons: Insert Skin, Remove Skin





Multi-plane Geometry

Roof levels:

Level	Pitch	Elevation
3.	10,00°	200
2.	30,00°	200
1.	75,00°	250

Add Delete

Eaves overhang: Offset 75 By arc

Curve resolution: By arc 10

